

URBA, A UNIVERSAL RISK BUSINESS ASSESSMENT

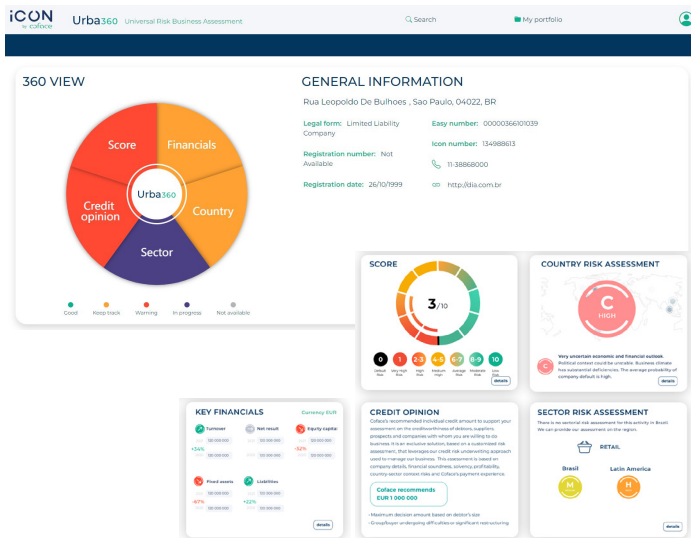
BENEFIT FROM COFACE'S EXPERTISE: AS A GLOBAL LEADER IN THE TRADE CREDIT INSURANCE INDUSTRY, OUR WORLDWIDE INFORMATION NETWORK AND RISK ANALYTICS CAN HELP YOU MAKE BETTER BUSINESS DECISIONS.

A 360 View of the different risk influencing a business decision

Anticipate to the risk of default with our Score

1. Be advised on how much outstanding to manage with your business counterparty, with our Advanced Credit Opinion
2. Understand the key financials driving these assessments
3. Get the risk context of the country and sector
4. Manage the risk of your world-wide portfolio

With URBA360 assess companies all around the world, to exclusive local expertise, unique data insights all in one place.



FROM DATA...

With our global network of information, you can access data **across 195 countries.**

As a leading credit insurer, we rely only on trustworthy data sources, including:

- Government and public information sources,
- Coface's credit insurance payment experience,
- Selected credit bureaus and information partners.

iCON is **accessible 24/7, either on our platform or via API.**

TO INSIGHTS...

Our experts can help you implement the best risk management strategy for you, based on our **75 years of credit insurance experience**, with:

- Macro-economic assessments from our Economic Research team,
- Micro-economic assessments from Coface underwriters and financial analysts,
- Scores and solutions developed by our data scientists.

TO BUSINESS DECISIONS

With Urba assess companies all around the world, to exclusive local expertise, unique data insight all in one place.

WHY COFACE ?

As a leading credit insurer, Coface maintains quality information for its own business and shares this value within its products:

- **Payment experiences** from debt recovery actions taken against buyers with receivables reported either as non-paid by our debt collection service clients.
- **Cross-checked information** based on expert analysis of both micro- and macro-economic risk.
- **Accurate, fine-tuned assessments** built on our constantly monitored data analysis model.